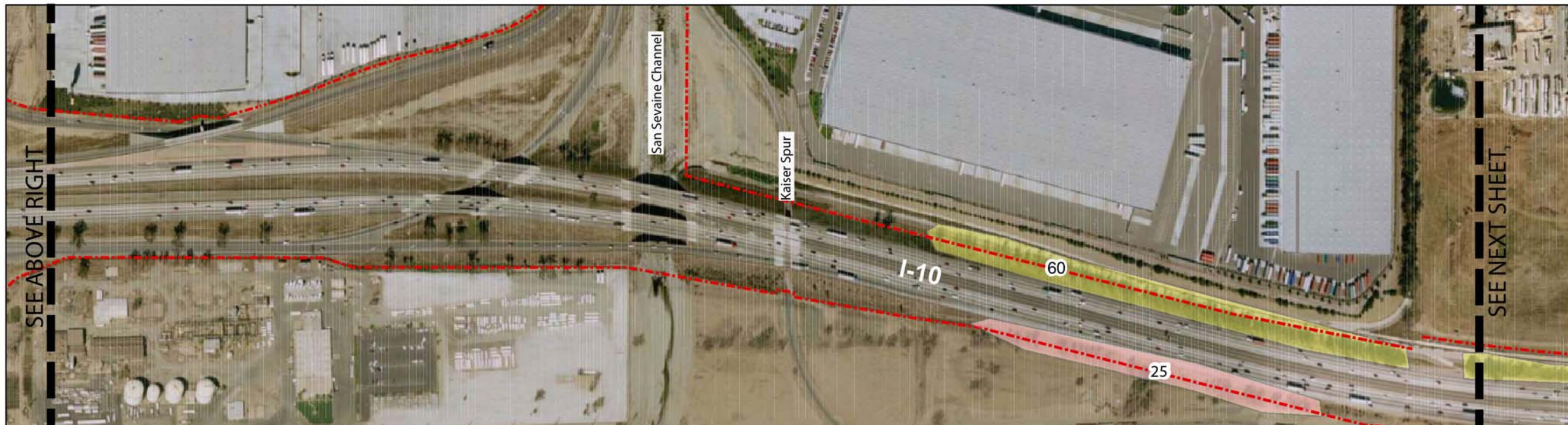
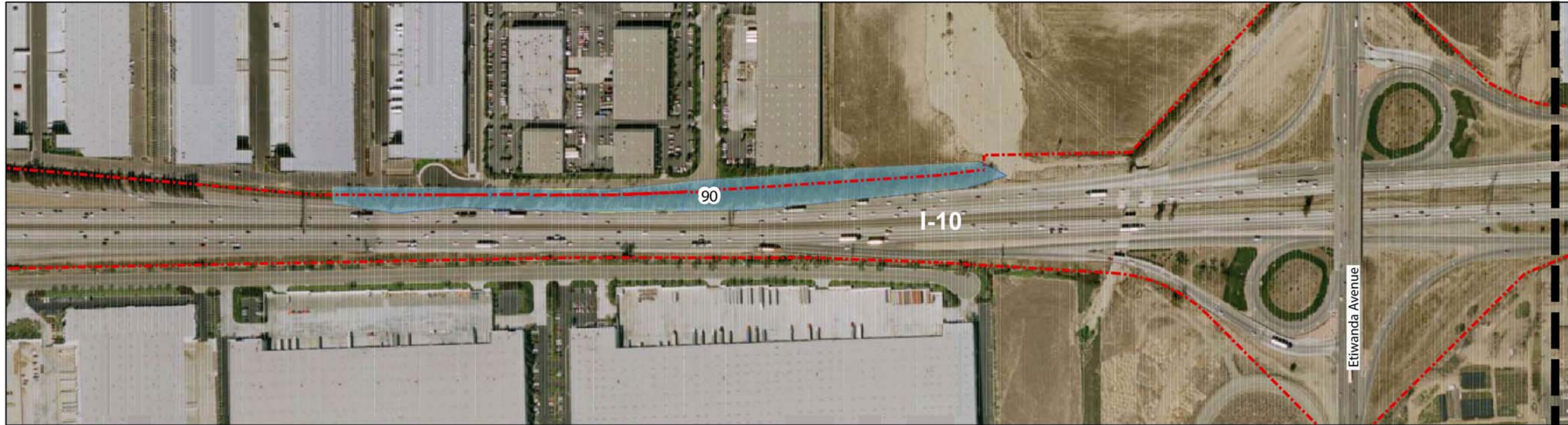


Appendix J Visual/Aesthetics

J1: Alternatives 2 and 3 – Tree Removals

J2: Alternatives 2 and 3 – Proposed Bridges and Retaining Walls

J1: Alternatives 2 and 3 – Tree Removals



SOURCE: PARSONS TRANSPORTATION GROUP GIS, EAGLE AERIAL 2005

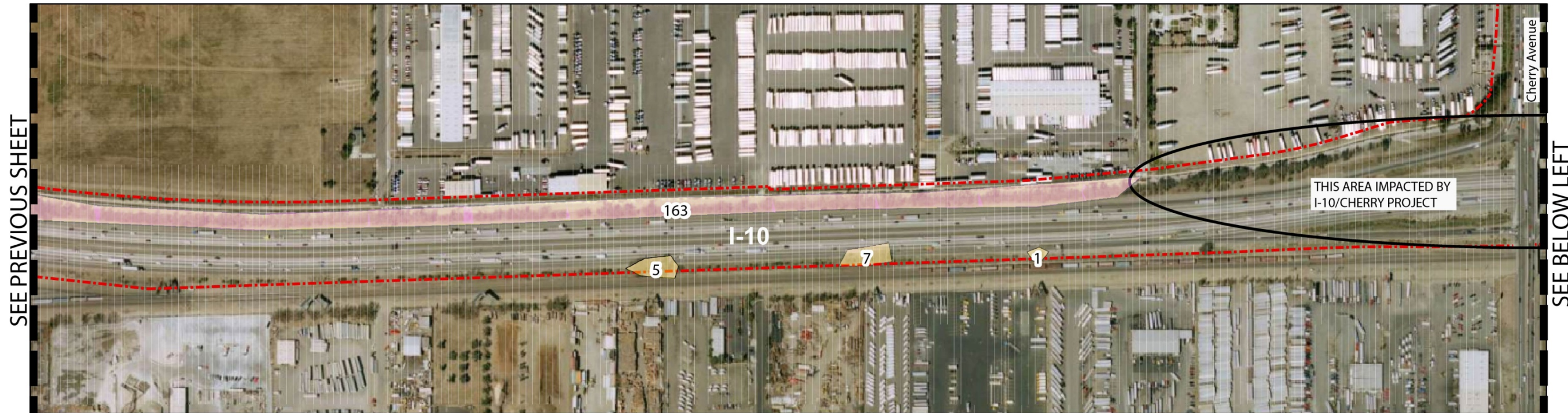


Legend

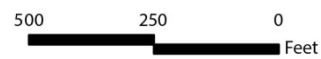
- - - Right of Way
- █ Possible Number of Impacted Eucalyptus Trees, Requires Further Study
- █ Number of Impacted Eucalyptus Trees
- █ Number of Eucalyptus Trees Anticipated to be Protected in Place

Exhibit 1 and 2
Alternative 2
Impacted Eucalyptus Trees along the I-10 ROW

This page intentionally left blank.



SOURCE: PARSONS TRANSPORTATION GROUP GIS, EAGLE AERIAL 2005



Legend

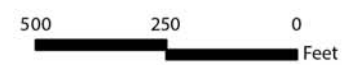
- Right of Way
- Possible Number of Impacted Eucalyptus Trees, Requires Further Study
- Number of Impacted Eucalyptus Trees
- Number of Eucalyptus Trees Anticipated to be Protected in Place

Exhibit 3 and 4
Alternative 2
Impacted Eucalyptus Trees along the I-10 ROW

This page intentionally left blank.



SOURCE: PARSONS TRANSPORTATION GROUP GIS, EAGLE AERIAL 2005



Legend

- - - Right of Way
- Possible Number of Impacted Eucalyptus Trees, Requires Further Study
- Number of Impacted Eucalyptus Trees
- Number of Eucalyptus Trees Anticipated to be Protected in Place

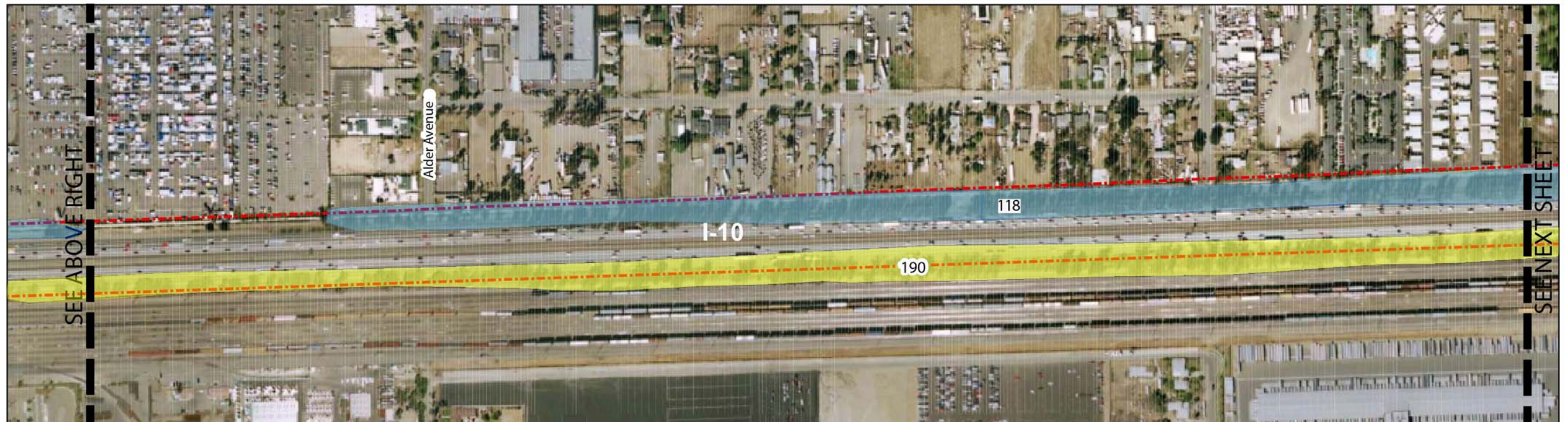
Exhibit 5 and 6
Alternative 2
Impacted Eucalyptus Trees along the I-10 ROW

This page intentionally left blank.



SEE PREVIOUS SHEET

SEE BELOW LEFT



SEE ABOVE RIGHT

SEE NEXT SHEET

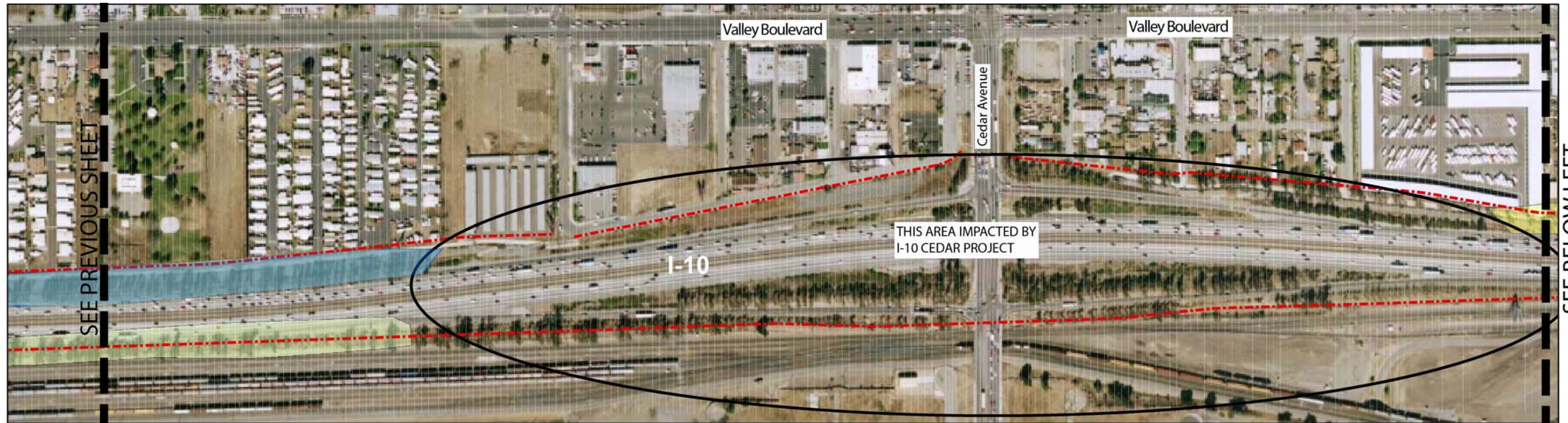
SOURCE: PARSONS TRANSPORTATION GROUP GIS, EAGLE AERIAL 2005



- Legend
- - - Right of Way
 - Possible Number of Impacted Eucalyptus Trees, Requires Further Study
 - Number of Impacted Eucalyptus Trees
 - Number of Eucalyptus Trees Anticipated to be Protected in Place

Exhibit 7 and 8
Alternative 2
Impacted Eucalyptus Trees along the I-10 ROW

This page intentionally left blank.



SOURCE: PARSONS TRANSPORTATION GROUP GIS, EAGLE AERIAL 2005

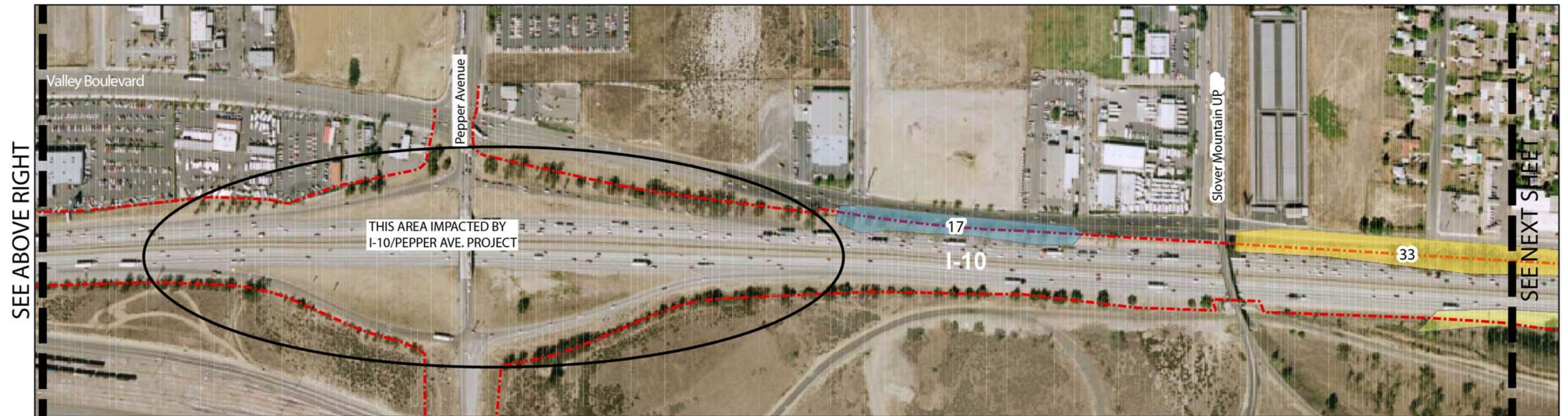


Legend

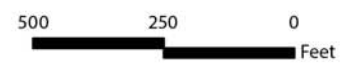
- - - Right of Way
- Possible Number of Impacted Eucalyptus Trees, Requires Further Study
- Number of Impacted Eucalyptus Trees
- Number of Eucalyptus Trees Anticipated to be Protected in Place

Exhibit 9 and 10
Alternative 2
Impacted Eucalyptus Trees along the I-10 ROW

This page intentionally left blank.



SOURCE: PARSONS TRANSPORTATION GROUP GIS, EAGLE AERIAL 2005



- Legend
- - - Right of Way
 - █ Possible Number of Impacted Eucalyptus Trees, Requires Further Study
 - █ Number of Impacted Eucalyptus Trees
 - █ Number of Eucalyptus Trees Anticipated to be Protected in Place

Exhibit 11 and 12
Alternative 2
Impacted Eucalyptus Trees along the I-10 ROW

This page intentionally left blank.



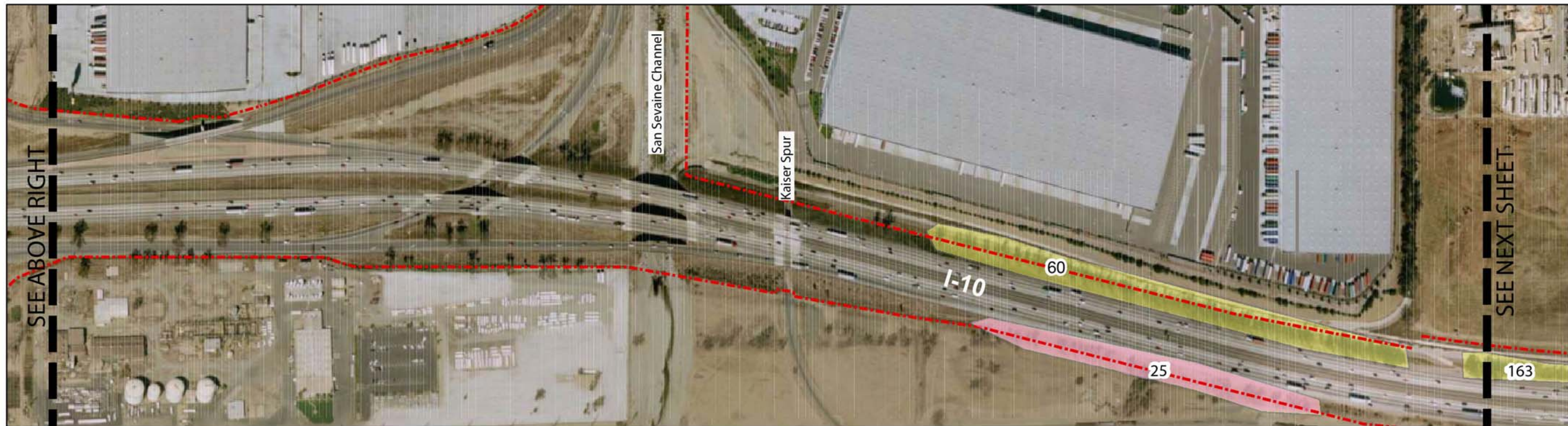
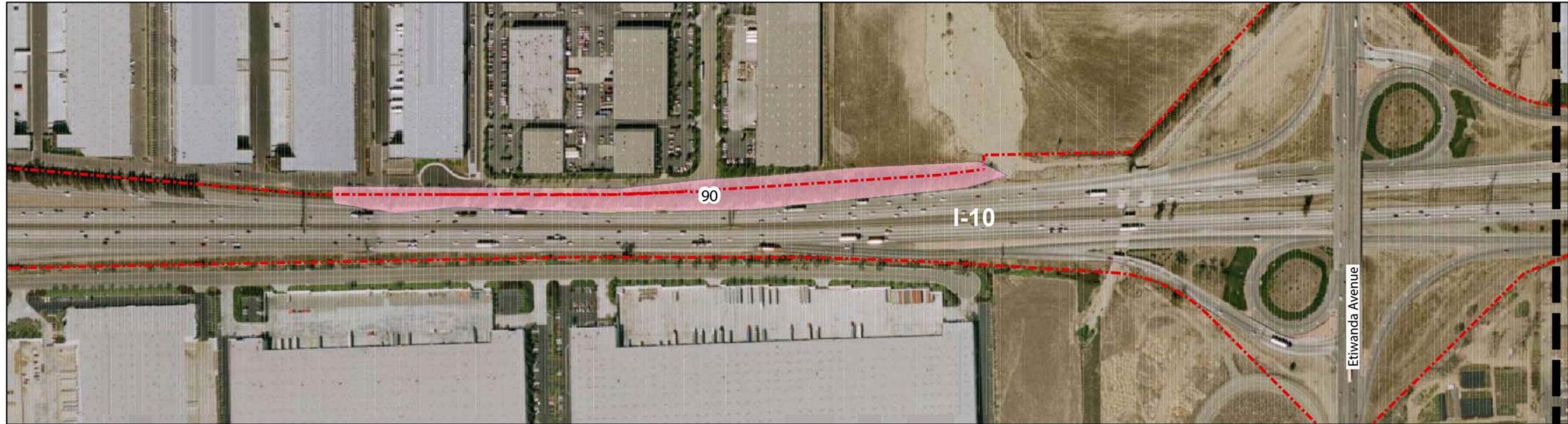
SOURCE: PARSONS TRANSPORTATION GROUP GIS, EAGLE AERIAL 2005



- Legend**
- - - Right of Way
 - Possible Impact, Requires Further Study
 - Number of Impacted Eucalyptus Trees
 - Number of Eucalyptus Trees Anticipated to be Protected in Place
 - (XX) Indicates a Continuation of Quantities from the Previous Plan View

Exhibit 13 and 14
Alternative 2
Impacted Eucalyptus Trees along the I-10 ROW

This page intentionally left blank.



SOURCE: PARSONS TRANSPORTATION GROUP GIS, EAGLE AERIAL 2005



- Legend
- - - Right of Way
 - Possible Number of Impacted Eucalyptus Trees, Requires Further Study
 - Number of Impacted Eucalyptus Trees
 - Number of Eucalyptus Trees Anticipated to be Protected in Place

Exhibit 15 and 16
Alternative 3
Impacted Eucalyptus Trees along the I-10 ROW

This page intentionally left blank.



SOURCE: PARSONS TRANSPORTATION GROUP GIS, EAGLE AERIAL 2005



- Legend
- - - Right of Way
 - Possible Number of Impacted Eucalyptus Trees, Requires Further Study
 - Number of Impacted Eucalyptus Trees
 - Number of Eucalyptus Trees Anticipated to be Protected in Place

Exhibit 17 and 18
Alternative 3
Impacted Eucalyptus Trees along the I-10 ROW

This page intentionally left blank.



SOURCE: PARSONS TRANSPORTATION GROUP GIS, EAGLE AERIAL 2005



Legend

- - - Right of Way
- Possible Number of Impacted Eucalyptus Trees, Requires Further Study
- Number of Impacted Eucalyptus Trees
- Number of Eucalyptus Trees Anticipated to be Protected in Place

Exhibit 19 and 20
Alternative 3
Impacted Eucalyptus Trees along the I-10 ROW

This page intentionally left blank.



SOURCE: PARSONS TRANSPORTATION GROUP GIS, EAGLE AERIAL 2005



Legend

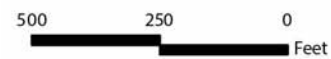
- - - Right of Way
- Possible Number of Impacted Eucalyptus Trees, Requires Further Study
- Number of Impacted Eucalyptus Trees
- Number of Eucalyptus Trees Anticipated to be Protected in Place

Exhibit 21 and 22
Alternative 3
Impacted Eucalyptus Trees along the I-10 ROW

This page intentionally left blank.



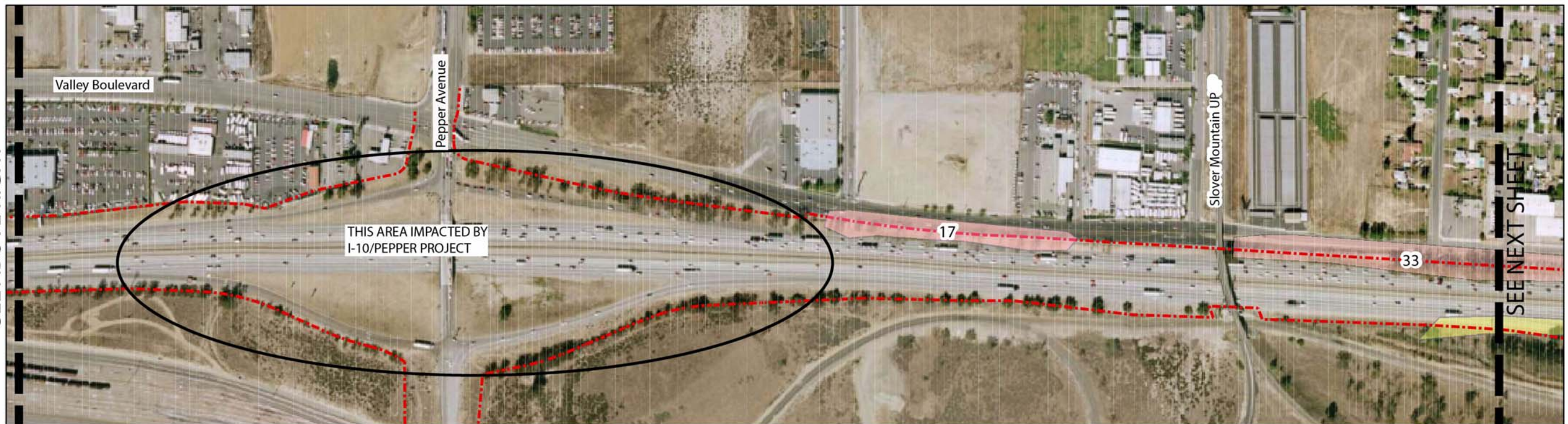
SOURCE: PARSONS TRANSPORTATION GROUP GIS, EAGLE AERIAL 2005



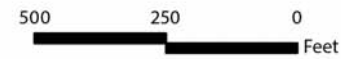
- Legend
- - - Right of Way
 - Possible Number of Impacted Eucalyptus Trees, Requires Further Study
 - Number of Impacted Eucalyptus Trees
 - Number of Eucalyptus Trees Anticipated to be Protected in Place

Exhibit 23 and 24
Alternative 3
Impacted Eucalyptus Trees along the I-10 ROW

This page intentionally left blank.



SOURCE: PARSONS TRANSPORTATION GROUP GIS, EAGLE AERIAL 2005



Legend

- - - Right of Way
- Number of Impacted Eucalyptus Trees
- Number of Eucalyptus Trees Anticipated to be Protected in Place

Exhibit 25 and 26
Alternative 3

Impacted Eucalyptus Trees along the I-10 ROW

This page intentionally left blank.



SEE PREVIOUS SHEET

SEE BELOW LEFT



SEE ABOVE RIGHT

SOURCE: PARSONS TRANSPORTATION GROUP GIS, EAGLE AERIAL 2005



Legend

- - - Project Study Area
- Number of Impacted Eucalyptus Trees
- Number of Eucalyptus Trees Anticipated to be Protected in Place
- (XX) Indicates a Continuation of Quantities from the Previous Plan View

Exhibit 27 and 28
Alternative 3
Impacted Eucalyptus Trees along the I-10 ROW

This page intentionally left blank.

J2: Alternatives 2 and 3 – Proposed Bridges and Retaining Walls

Table B-1. Summary of Proposed Bridge Work by Alternative

Bridge No.	Interchange or Location	Alternative		Notes	Bridge No.	Interchange or Location	Alternative		Notes
		2	3				2	3	
53-0858	Town Avenue UC		Maintain		54-0835	Slover Mountain (Railroad)	Replace	Replace	
53-0859	San Antonio Avenue UC		Maintain		54-0817	Rancho Avenue OC	Maintain	Maintain	Tie-back walls under bridge
53-0860	Indian Hill Boulevard		Widen	Widen to the outside	54-0464R & 54-0464L	Colton Overhead (Railroad)	Widen	Widen	
53-1019	College Avenue RCB Bridge		Maintain		54-0462	La Cadena Drive UC	Widen	Widen	
54-0453	Mills Avenue UC		Widen	Widen to the outside	54-0462S	La Cadena Drive EB Off-Ramp UC	Widen	Replace	
54-0451	San Antonio Wash Bridge		Widen	Widen to the outside	54-0461	9 th Street UC	Widen	Widen	
54-0450	Monte Vista Avenue UC		Replace		54-0460 & 54-0861K	Pavillion Spur Overhead/ 9 th Street WB Off-Ramp	Abandon	Abandon	
51-1186	Central Avenue UC		Widen	Widen to the outside	54-0459	Mt. Vernon Avenue OC	Replace	Maintain	Tie-back walls under bridge
54-0448	Benson Avenue UC		Widen	Widen to the outside	54-0830L & 54-0830R	Warm Creek Bridges	Widen	Widen	
54-1187	Mountain Avenue UC		Widen	Widen to the outside	54-0292R & 54-0292L	Santa Ana River Bridges	Widen	Widen	

Table B-1. Summary of Proposed Bridge Work by Alternative

Bridge No.	Interchange or Location	Alternative		Notes	Bridge No.	Interchange or Location	Alternative		Notes
		2	3				2	3	
54-0446	San Antonio Avenue OC		Replace		54-0292G	Santa Ana River Bridge (EB I-10 to NB/SB I-215)	Widen	Maintain	
54-0445	Euclid Avenue OC		Replace		54-0823G	EB I-10 to NB I-215 Connector	Maintain	Maintain	
54-0444	Sultana Avenue OC		Replace		54-0479L & 54-0479R	I-215 Bridge over I-10	Maintain	Maintain	
54-0443	Campus Avenue OC		Replace		54-1064F	WB I-10 to NB I-215 Connector OC	Maintain	Maintain	
54-0442	6 th Street OC		Replace		54-0822F	WB I-10 to SB I-215 Connector OC	Maintain	Maintain	
54-1117	West Cucamonga Channel		Widen	Widen to the outside	54-0821F	Sunwest Lane WB On-Ramp	Maintain	Maintain	
54-0441	Grove Avenue UC		Replace		54-0601	Hunts Lane UC	Widen	Widen	
54-0440	4 th Street UC		Replace		54-0600	Waterman Avenue UC	Widen	Widen	
54-0439	Vineyard Avenue OC		Replace		54-1105K	San Timoteo Creek (Carnegie Drive WB On-Ramp)	Maintain	Maintain	
54-0438L & 54-0438R	Cucamonga Wash Bridges		Widen	Widen to the outside	54-0599	San Timoteo Creek	Widen	Widen	
54-0437L & 54-0437R	Holt Boulevards Ramp UC		Widen	Widen to the outside	54-0598	Tippecanoe Avenue UC	Widen	Widen	

Table B-1. Summary of Proposed Bridge Work by Alternative

Bridge No.	Interchange or Location	Alternative		Notes	Bridge No.	Interchange or Location	Alternative		Notes
		2	3				2	3	
54-1107	Archibald Avenue Off-Ramp /Holt Boulevard UC		Maintain		54-0597	Richardson Street OC	Replace	Replace	
54-1166	Archibald Avenue OC		Maintain		54-0596	Mountain View Avenue UC	Widen	Widen	Widen to the outside
54-1201L & 54-0560R	Haven Avenue OC	Maintain	Maintain	Tie-back walls under bridge	54-0570	West Redlands Overhead (Railroad UC)	Widen	Widen	Widen to the outside
54-0539	Milliken Ave. OC	Maintain	Maintain	Tie-back walls under bridge	54-0595	California Street UC	Widen	Widen	Widen to the outside
54-0913G	EB I-10 to NB I-15 Connector OC	Maintain	Maintain		54 0594	Nevada Street UC	Widen	Widen	Widen to the outside
54-0908G	NB I-15 to WB I-10 Connector OC	Maintain	Maintain		54-0593	Alabama Street OC	Maintain	Maintain	
54-1065F	WB I-10 to SB I-15 Connector OC	Maintain	Maintain		54-0937G	EB I-210 to WB I-10/ Alabama Street WB Off-ramp	Maintain	Maintain	
54-0909L & 54-0909R	I-15 Bridge over I-10	Maintain	Maintain		54-0938G	EB I-10 to WB I-210 Connector OC	Maintain	Maintain	
54-0914F	WB I-10 to SB I-15 Bridge over Day Canyon Channel	Maintain	Widen		54-0929G	EB I-210 to EB I-10 Connector OC	Maintain	Maintain	
54-0927F	WB I-10 to NB I-15 Bridge over Day Canyon Channel	Maintain	Widen		54-0931H	WB I-10 to WB I-210/ Lugonia Ave UC	Maintain	Maintain	

Table B-1. Summary of Proposed Bridge Work by Alternative

Bridge No.	Interchange or Location	Alternative		Notes	Bridge No.	Interchange or Location	Alternative		Notes
		2	3				2	3	
54-0351	Day Canyon Channel Bridge	Widen	Widen		54-0592	Tennessee Street OC	Replace	Replace	
54-0378 L & R 54-0378S	Etiwanda Wash Bridges & EB Off-Ramp Bridge	Widen	Widen		54-0930F	WB I-10 to WB I-210 over Tennessee Street UC	Maintain	Maintain	
54-0463	Etiwanda Avenue OC	Maintain	Maintain		54-0591	New York Street/Colton Avenue UC	Maintain	Maintain	
54-1214K	Valley Boulevard WB Off-Ramp OC	Maintain	Maintain		5- 0583	Texas Street UC	Maintain	Maintain	
54-0030L & 54-0030R	Valley Boulevard EB On-Ramp UC	Widen	Widen		54-0580	Eureka Street UC	Maintain	Maintain	
54-0454 L & R 54-0454S	Etiwanda San Sevaive Flood Control Channel	Widen	Widen		54-0581	I-10/SR 38 (Orange Avenue)	Maintain	Maintain	
54 0416	Kaiser Spur Overhead (Railroad UC)	Widen	Widen		54-0579	6 th Street UC	Reconstruct	Reconstruct	Median area only
54-0434	San Sevaive Creek	Abandon	Abandon		54-0578	Church Street UC	Maintain	Maintain	
54-0425M	Mulberry Creek	Abandon	Abandon		54-0472	Mill Creek Zanja Channel/Redlands OH	Maintain	Maintain	
54-0543	Cherry Avenue OC	Maintain	Maintain		54-0582	University Street UC	Maintain	Maintain	
54-0538	Citrus Avenue OC	Maintain	Maintain		54-0584	Citrus Avenue UC	Reconstruct	Reconstruct	Median area only
54-1280	Cypress Avenue OC	Maintain	Maintain		54-0585	Cypress Avenue UC	Reconstruct	Reconstruct	Median area only
54-1169	Sierra Avenue OC	Maintain	Maintain		54-0586	Palm Avenue UC	Maintain	Maintain	

Table B-1. Summary of Proposed Bridge Work by Alternative

Bridge No.	Interchange or Location	Alternative		Notes	Bridge No.	Interchange or Location	Alternative		Notes
		2	3				2	3	
54-0035	Cedar Avenue OC	Maintain	Maintain	Tie-back walls under bridge	54-0587	Highland Avenue UC	Reconstruct	Reconstruct	Median area only
54-1116	Rialto Channel RCB Bridge	Widen	Widen		54-0588	Ford Street UC	Widen	Widen	Widen to the outside
54-0536	Riverside Avenue OC	Maintain	Maintain		54-0589	Redlands Boulevard Off-Ramp UC	Widen	Widen	Widen to the outside
54-0531	Pepper Avenue OC	Maintain	Maintain						

Table B-2. Alternative 2 Proposed Retaining Walls

Wall No.	Facility	Location	Nearest Interchange	Retaining Walls						Wall Location
				Length (Ft)	Min Height (Ft)	Max Height (Ft)	Avg Height (Ft)	Area (Sq Ft)	Cut/Fill Wall	
RW 1484	Mainline	EB I-10	Milliken	180	4.0	14.0	9.0	1,620	Tie Back	Edge of Shoulder
RW 1562	Mainline/Ramp	EB I-10	I-15	1,587	4	6	5.0	7,935	Fill	Edge of Shoulder
RW 1581	Ramp	Etiwanda EB Off-Ramp	Etiwanda	126	4.0	4.0	4.0	504	Fill	Edge of Shoulder
RW 1618	Ramp/Mainline	Etiwanda EB On-Ramp/ EB-10	Etiwanda	1,169	6.0	12.0	9.0	10,521	Fill	Edge of Shoulder
RW 1851	Mainline	WB I-10	Sierra	318	4.0	12.0	8.0	2,544	Cut	Edge of Shoulder
RW 1850	Mainline	EB I-10	Sierra	555	4.0	16	10	5,550	Cut	Edge of Shoulder
RW 1858	Mainline	EB I-10	Sierra	429	4.0	16	10	4,290	Cut	Edge of Shoulder
RW 1859	Ramp	Sierra WB On-Ramp	Sierra	500	4.0	4.0	4.0	2,000	Cut	Edge of Shoulder
RW 1970	Mainline	EB I-10	Cedar	623	4.0	8.0	6.0	3,738	Cut	Edge of Shoulder
RW 1976	Mainline	EB I-10	Cedar	145	12.0	12.0	12.0	1,740	Tie Back	Edge of Shoulder
RW 1978	Mainline	EB I-10	Cedar	632	4.0	8.0	6.0	3,792	Cut	Edge of Shoulder
RW 1988	Mainline/Ramp	EB I-11	Cedar	2,597	4.0	8.0	6.0	15,582	Cut	Edge of Shoulder
RW 1971	Mainline	WB I-10	Cedar	525	4.0	8.0	6.0	3,150	Cut	Edge of Shoulder
RW 1975	Mainline	WB I-10	Cedar	145	12.0	12.0	12.0	1,740	Cut	Edge of Shoulder
RW 1977	Mainline	WB I-10	Cedar	330	4.0	8.0	6.0	1,980	Cut	Edge of Shoulder
RW 1987	Ramp	Cedar WB Off-Ramp	Cedar	236	4.0	8.0	6.0	1,416	Cut	Edge of Shoulder
RW 2051	Mainline	WB I-10	Riverside	339	4.0	8.0	6.0	2,034	Cut	Edge of Shoulder
RW 2055	Mainline	WB I-10	Riverside	326	4.0	8.0	6.0	1,956	Cut	Edge of Shoulder
RW 2026	Mainline	EB I-10	Riverside	855	4.0	8.0	6.0	5,130	Cut	Edge of Shoulder
RW 2036	Mainline	EB I-10	Riverside	687	4.0	8.0	6.0	4,122	Fill	Edge of Shoulder

Table B-2. Alternative 2 Proposed Retaining Walls

Wall No.	Facility	Location	Nearest Interchange	Retaining Walls						Cut/Fill Wall	Wall Location
				Length (Ft)	Min Height (Ft)	Max Height (Ft)	Avg Height (Ft)	Area (Sq Ft)			
RW 2048	Mainline	EB I-10	Riverside	563	4.0	12.0	8.0	4,504	Fill	Edge of Shoulder	
RW 2056	Mainline	EB I-10	Riverside	478	4.0	12.0	8.0	3,824	Cut	Edge of Shoulder	
RW 2064	Mainline/Ramp	Riverside EB On-Ramp/ EB I-10	Riverside	1,046	4.0	4.0	4.0	4,184	Fill	Edge of Shoulder	
RW 2073	Mainline	WB I-10	Pepper	469	4.0	8.0	6.0	2,814	Cut	Edge of Shoulder	
RW 2018	Mainline/Ramp	Pepper EB On-Ramp	Pepper	1,013	4.0	12.0	8.0	8,104	Fill	Edge of Shoulder	
RW 2157	Mainline	WB I-10	Rancho	122	4.0	8.0	6.0	732	Cut	Edge of Shoulder	
RW 2159	Mainline	WB I-10	Rancho	72	8.0	8.0	8.0	576	Cut	Edge of Shoulder	
RW 2161	Mainline	WB I-10	Rancho	670	4.0	8.0	6.0	4,020	Tie Back	Edge of Shoulder	
RW 2158	Mainline	EB I-10	Rancho	100	4.0	8.0	6.0	600	Cut	Edge of Shoulder	
RW 2160	Mainline	EB I-10	Rancho	73	8.0	8.0	8.0	584	Tie Back	Edge of Shoulder	
RW 2162	Mainline	EB I-10	Rancho	174	4.0	8.0	6.0	1,044	Cut	Edge of Shoulder	
RW 2163	Ramp	Rancho WB Off-Ramp	Rancho	447	4.0	4.0	4.0	1,788	Fill	Edge of Shoulder	
RW 2154	Ramp	Rancho EB Off-Ramp	Rancho	286	4.0	16.0	10.0	2,860	Fill	Edge of Shoulder	
RW 2178	Mainline	EB I-10	9 th /La Cadena	243	4.0	12.0	8.0	1,944	Fill	Edge of Shoulder	
RW 2186	Mainline	EB I-10	9 th /La Cadena	799	4.0	26.0	15.0	11,985	Fill	Edge of Shoulder	
RW 2194	Mainline	EB I-10	9 th /La Cadena	412	4.0	12.0	8.0	3,296	Fill	Edge of Shoulder	
RW 2200	Mainline	EB I-10	9 th /La Cadena	453	4.0	12.0	8.0	3,624	Fill	Edge of Shoulder	
RW 2196	Ramp	9 th EB Off-Ramp	9 th /La Cadena	323	4.0	18.0	11.0	3,553	Fill	Edge of Shoulder	
RW 2202	Ramp	9 th EB On-Ramp	9 th /La Cadena	661	4.0	8.0	6.0	3,966	Fill	Edge of Shoulder	
RW 2208	Mainline/Ramp	9 th EB On-Ramp	9 th /La Cadena	878	4.0	16.0	10.0	8,780	Fill	Edge of Shoulder	

Table B-2. Alternative 2 Proposed Retaining Walls

Wall No.	Facility	Location	Nearest Interchange	Retaining Walls						Wall Location
				Length (Ft)	Min Height (Ft)	Max Height (Ft)	Avg Height (Ft)	Area (Sq Ft)	Cut/Fill Wall	
RW 2209	Mainline	WB I-10	Mt. Vernon	848	4.0	4.0	4.0	3,392	Fill	Edge of Shoulder
RW 2223	Mainline	WB I-10	Mt. Vernon	318	4.0	12.0	8.0	2,544	Cut	Edge of Shoulder
RW 2227	Mainline	WB I-10	Mt. Vernon	69	8.0	12.0	10.0	690	Tie Back	Edge of Shoulder
RW 2229	Mainline	WB I-10	Mt. Vernon	520	4.0	8.0	6.0	3,120	Cut	Edge of Shoulder
RW 2220	Mainline	EB I-10	Mt. Vernon	1,079	4.0	8.0	6.0	6,474	Cut	Edge of Shoulder
RW 2219	Ramp	Mt. Vernon WB On-Ramp	Mt. Vernon	385	4.0	8.0	6.0	2,310	Cut	Edge of Shoulder
RW 2243	Ramp	Sperry WB Off-Ramp	Mt. Vernon	352	4.0	12.0	8.0	2,816	Fill	Edge of Shoulder
RW 2293	Ramp	Sunwest Ln WB On-Ramp	I-215	307	4.0	10.0	7.0	2,149	Cut	Edge of Shoulder
RW 2331	Mainline	WB I-10	Waterman	557	4.0	8.0	6.0	3,342	Fill	Edge of Shoulder
RW 2335	Mainline/Ramp	Carnegie Dr WB On-Ramp/WB I-10	Waterman	753	4.0	12.0	8.0	6,024	Fill	Edge of Shoulder
RW 2347	Mainline	WB I-10	Waterman	171	4.0	4.0	4.0	684	Fill	Edge of Shoulder
RW 2311	Ramp	Waterman WB On-Ramp	Waterman	944	4.0	8.0	6.0	5,664	Fill	Edge of Shoulder
RW 2346	Ramp	Waterman EB On-Ramp	Waterman	246	4.0	8.0	6.0	1,476	Fill	Edge of Shoulder
RW 2353	Mainline/Ramp	Carnegie WB Off-Ramp/WB I-10	Tippecanoe	1,123	4.0	4.0	4.0	4,492	Fill	Edge of Shoulder
RW 2405	Mainline	WB I-10	Tippecanoe	882	4.0	8.0	6.0	5,292	Fill	Edge of Shoulder
RW 2388	Mainline	EB I-10	Tippecanoe	550	4.0	8.0	6.0	3,300	Fill	Edge of Shoulder

Table B-2. Alternative 2 Proposed Retaining Walls

Wall No.	Facility	Location	Nearest Interchange	Retaining Walls						Cut/Fill Wall	Wall Location
				Length (Ft)	Min Height (Ft)	Max Height (Ft)	Avg Height (Ft)	Area (Sq Ft)			
RW 2383	Ramp	Tippecanoe WB Loop On-Ramp	Tippecanoe	219	4.0	4.0	4.0	876	Fill	Edge of Shoulder	
RW 2415	Mainline	WB I-10	Mountain View	721	4.0	8.0	6.0	4,326	Fill	Edge of Shoulder	
RW 2431	Mainline	WB I-10	Mountain View	891	4.0	8.0	6.0	5,346	Fill	Edge of Shoulder	
RW 2443	Mainline	WB I-10	Mountain View	778	4.0	8.0	6.0	4,668	Fill	Edge of Shoulder	
RW 2455	Mainline	WB I-10	Mountain View	224	4.0	12.0	8.0	1,792	Fill	Edge of Shoulder	
RW 2461	Mainline	WB I-10	Mountain View	1,510	4.0	14.0	9.0	13,590	Fill	Edge of Shoulder	
RW 2422	Mainline	EB I-10	Mountain View	363	4.0	4.0	4.0	1,452	Fill	Edge of Shoulder	
RW 2434	Mainline	EB I-10	Mountain View	877	4.0	8.0	6.0	5,262	Fill	Edge of Shoulder	
RW 2442	Mainline	EB I-10	Mountain View	655	4.0	8.0	6.0	3,930	Fill	Edge of Shoulder	
RW 2454	Mainline	EB I-10	Mountain View	465	8.0	12.0	10.0	4,650	Fill	Edge of Shoulder	
RW 2483	Mainline	WB I-10	California	923	4.0	12.0	8.0	7,384	Fill	Edge of Shoulder	
RW 2495	Mainline	WB I-10	California	527	4.0	12.0	8.0	4,216	Fill	Edge of Shoulder	
RW 2507	Mainline	WB I-10	California	1,273	4.0	14.0	9.0	11,457	Fill	Edge of Shoulder	
RW 2464	Mainline	EB I-10	California	1,025	4.0	12.0	8.0	8,200	Fill	Edge of Shoulder	

Table B-2. Alternative 2 Proposed Retaining Walls

Wall No.	Facility	Location	Nearest Interchange	Retaining Walls						
				Length (Ft)	Min Height (Ft)	Max Height (Ft)	Avg Height (Ft)	Area (Sq Ft)	Cut/Fill Wall	Wall Location
RW 2488	Mainline	EB I-10	California	550	4.0	8.0	6.0	3,300	Fill	Edge of Shoulder
RW 2496	Mainline	EB I-10	California	628	4.0	10.0	7.0	4,396	Fill	Edge of Shoulder
RW 2508	Mainline	EB I-10	California	1,141	4.0	10.0	7.0	7,987	Fill	Edge of Shoulder
RW 2481	Ramp	California WB On-Ramp	California	249	6.0	12.0	9.0	2,241	Fill	Edge of Shoulder
RW 2521	Mainline	WB I-10	Alabama	696	4.0	8.0	6.0	4,176	Fill	Edge of Shoulder
RW 2522	Mainline/Ramp	EB I-10	Alabama	1,311	4.0	8.0	6.0	7,866	Fill	Edge of Shoulder
RW 2562	Ramp	Tennessee EB Off-Ramp	Tennessee	132	4.0	6.0	5.0	659	Cut	Edge of Shoulder
RW 2578	Ramp	Tennessee EB On-Ramp	Tennessee	689	4.0	4.0	4.0	2,756	Fill	Edge of Shoulder
RW 2598	Mainline	EB I-10	Texas	571	4.0	4.0	4.0	2,284	Fill	Edge of Shoulder
RW 2606	Mainline	EB I-10	Texas	307	4.0	4.0	4.0	1,228	Fill	Edge of Shoulder
RW 2729	Mainline/Ramp	WB I-10	Ford	1,495	4.0	12.0	8.0	11,960	Cut	Edge of Shoulder
RW 2745	Mainline	WB I-10	Ford	260	4.0	8.0	6.0	1,560	Fill	Edge of Shoulder
RW 2751	Mainline	WB I-10	Ford	639	4.0	8.0	6.0	3,834	Fill	Edge of Shoulder
RW 2761	Mainline	WB I-10	Ford	125	4.0	4.0	4.0	500	Fill	Edge of Shoulder
RW 2728	Mainline	EB I-10	Ford	1,221	4.0	8.0	6.0	7,326	Fill	Edge of Shoulder
RW 2746	Mainline	EB I-10	Ford	309	4.0	8.0	6.0	1,854	Fill	Edge of Shoulder
RW 2754	Mainline	EB I-10	Ford	110	4.0	4.0	4.0	440	Fill	Edge of Shoulder
RW 2744	Ramp	Ford EB Off-Ramp	Ford	287	4.0	4.0	4.0	1,148	Fill	Edge of Shoulder
TOTAL				51,574				350,559		

Table B-3. Alternative 3 Proposed Retaining Walls

Wall No.	Facility	Location	Nearest Interchange	Retaining Wall Quantities						
				Length (Ft)	Min Height (Ft)	Max Height (Ft)	Avg Height (Ft)	Area (Sq Ft)	Cut/Fill Wall	Wall Location
RW 12	Cross Street	Monte Vista Lt	Monte Vista	440	4.0	4.0	4.0	1,760	Fill	Back of Soundwall
RW 703	Mainline	WB I-10	Indian Hill	372	6.0	16.0	11.0	4,092	Fill	Edge of Shoulder
RW 722	Mainline	EB I-10	Indian Hill	690	8.0	12.0	10.0	6,900	Fill	Edge of Shoulder
RW 1000	Mainline	EB I-10	Indian Hill	1,585	6.0	10.0	8.0	12,680	Fill	Edge of Shoulder
RW 1018	Mainline	EB I-10	Monte Vista	100	6.0	10.0	8.0	800	Fill	Edge of Shoulder
RW 1028	Mainline	EB I-10	Monte Vista	803	6.0	14.0	10.0	8,030	Fill	Edge of Shoulder
RW 1038	Mainline	EB I-10	Monte Vista	271	12.0	12.0	12.0	3,252	Fill	Edge of Shoulder
RW 1031	Mainline	WB I-10	Monte Vista	524	4.0	12.0	8.0	4,192	Fill	Edge of Shoulder
RW 1037	Mainline	WB I-10	Monte Vista	436	4.0	14.0	9.0	3,924	Fill	Edge of Shoulder
RW 1029	Ramp	Monte Vista WB On-Ramp	Monte Vista	196	6.0	8.0	7.0	1,372	Fill	Edge of Shoulder
RW 1039	Ramp	Monte Vista WB Off-Ramp	Monte Vista	263	4.0	10.0	7.0	1,841	Cut	Edge of Shoulder
RW 1041	Ramp	Monte Vista WB Off-Ramp	Monte Vista	199	4.0	4.0	4.0	796	Fill	Edge of Shoulder
RW1024	Ramp	Monte Vista EB Off-Ramp	Monte Vista	248	4.0	4.0	4.0	992	Fill	Edge of Shoulder
RW 1040	Ramp	Monte Vista EB On-Ramp	Monte Vista	160	4.0	6.0	5.0	800	Fill	Edge of Shoulder
RW1053	Mainline	WB I-10	Central	160	6.0	10.0	8.0	1,280	Cut	Edge of Shoulder
RW 1067	Mainline	WB I-10	Central	380	4.0	10.0	7.0	2,660	Fill	Edge of Shoulder
RW 1069	Mainline/Ramp	WB I-10	Central	2,341	6.0	14.0	10.0	23,410	Fill	Edge of Shoulder

Table B-3. Alternative 3 Proposed Retaining Walls

Wall No.	Facility	Location	Nearest Interchange	Retaining Wall Quantities						
				Length (Ft)	Min Height (Ft)	Max Height (Ft)	Avg Height (Ft)	Area (Sq Ft)	Cut/Fill Wall	Wall Location
RW 1066	Mainline	EB I-10	Central	498	4.0	10.0	7.0	3,486	Fill	Edge of Shoulder
RW 1068	Mainline/Ramp	EB I-10	Central	2,440	4.0	14.0	9.0	21,960	Fill	Edge of Shoulder
RW 1057	Ramp	Central WB On-Ramp	Central	549	4.0	14.0	9.0	4,941	Cut	Edge of Shoulder
RW 1094	Mainline	EB I-10	Mountain	2,260	4.0	20.0	12.0	27,120	Fill	Edge of Shoulder
RW 1120	Mainline	EB I-10	Mountain	397	4.0	9.5	7.0	2,779	Fill	Edge of Shoulder
RW 1126	Mainline	EB I-10	Mountain	363	4.0	8.0	6.0	2,178	Fill	Edge of Shoulder
RW 1138	Mainline	EB I-10	Mountain	1,537	4.0	21.0	13.0	19,981	Cut	Edge of Shoulder
RW 1093	Mainline	WB I-10	Mountain	691	6.0	16.0	11.0	7,601	Fill	Edge of Shoulder
RW 1121	Mainline	WB I-10	Mountain	397	4.0	14.0	9.0	3,573	Fill	Edge of Shoulder
RW 1127	Mainline	WB I-10	Mountain	392	4.0	12.0	8.0	3,136	Fill	Edge of Shoulder
RW 1137	Mainline	WB I-10	Mountain	1,525	6.0	26.0	16.0	24,400	Cut	Edge of Shoulder
RW 1130	Ramp	Mountain EB On-Ramp	Mountain	683	4.0	8.0	6.0	4,098	Fill	Edge of Shoulder
RW 11	Cross Street	Sultana Lt	Euclid	110	3.0	5.0	4.0	440	Fill	Back of Soundwall
RW 12	Cross Street	Sultana Rt	Euclid	76	3.0	5.0	4.0	304	Fill	Back of Soundwall
RW 1155	Mainline	WB I-10	Euclid	2,476	20.0	28.0	24.0	59,424	Cut	Edge of Shoulder
RW 1175	Mainline	WB I-10	Euclid	648	9.0	24.0	17.0	11,016	Cut	Edge of Shoulder
RW 1197	Mainline	WB I-10	Euclid	1,356	26.0	30.0	28.0	37,968	Cut	Edge of Shoulder
RW 1213	Mainline	WB I-10	Euclid	1,710	13.0	25.0	19.0	32,490	Cut	Edge of Shoulder
RW 1231	Mainline	WB I-10	Euclid	1131	4.0	12.0	8.0	9,048	Cut	Edge of Shoulder

Table B-3. Alternative 3 Proposed Retaining Walls

Wall No.	Facility	Location	Nearest Interchange	Retaining Wall Quantities						
				Length (Ft)	Min Height (Ft)	Max Height (Ft)	Avg Height (Ft)	Area (Sq Ft)	Cut/Fill Wall	Wall Location
RW 1241	Mainline	WB I-10	Euclid	1,438	4.0	12.0	8.0	11,504	Fill	Edge of Shoulder
RW 1154	Mainline	EB I-10	Euclid	2,713	14.0	28.0	21.0	56,973	Cut	Edge of Shoulder
RW 1178	Mainline	EB I-10		449	4.0	12.0	8.0	3,592	Cut	Edge of Shoulder
RW 1184	Mainline	EB I-10	Euclid	585	5.0	19.0	12.0	7,020	Cut	Edge of Shoulder
RW 1198	Mainline	EB I-10	Euclid	1,407	19.0	21.0	20.0	28,140	Cut	Edge of Shoulder
RW 1214	Mainline	EB I-10	Euclid	1,340	14.0	20.0	17.0	22,780	Cut	Edge of Shoulder
RW 1228	Mainline	EB I-10	Euclid	1,021	6.0	10.0	8.0	8,168	Cut	Edge of Shoulder
RW 1238	Mainline	EB I-10	Euclid	615	4.0	8.0	6.0	3,690	Fill	Edge of Shoulder
RW 1242	Mainline	EB I-10	Euclid	1,476	4.0	12.0	8.0	11,808	Fill	Edge of Shoulder
RW 1191	Ramp	Euclid WB Off-Ramp	Euclid	771	16.0	30.0	23.0	17,733	Cut	Edge of Shoulder
RW 1194	Ramp	Euclid EB On-Ramp	Euclid	439	10.0	21.0	16.0	7,024	Cut	Edge of Shoulder
RW 16	Cross Street	Euclid Rt	Euclid	175	3.0	5.0	4.0	700	Fill	Back of Soundwall
RW 1259	Mainline/Ramp	WB I-10 / 4 th WB On-Ramp	4 th	1,730	8.0	14.0	11.0	19,030	Fill	Edge of Shoulder
RW 1273	Mainline	WB I-10	4 th	503	4.0	22.0	13.0	6,539	Fill	Edge of Shoulder
RW 1279	Mainline	WB I-10	4 th	471	4.0	20.0	12.0	5,652	Fill	Edge of Shoulder
RW 1260	Mainline	EB I-10	4 th	1,016	10.0	14.0	12.0	12,192	Fill	Edge of Shoulder
RW 1272	Mainline	EB I-10	4 th	447	4.0	20.0	12.0	5,364	Fill	Edge of Shoulder
RW 1276	Mainline	EB I-10	4 th	319	4.0	22.0	13.0	4,147	Fill	Edge of Shoulder
RW 1278	Ramp/Mainline	4 th EB On-Ramp / EB I-10	4 th	1,303	4.0	16.0	10.0	13,030	Fill	Edge of Shoulder

Table B-3. Alternative 3 Proposed Retaining Walls

Wall No.	Facility	Location	Nearest Interchange	Retaining Wall Quantities						
				Length (Ft)	Min Height (Ft)	Max Height (Ft)	Avg Height (Ft)	Area (Sq Ft)	Cut/Fill Wall	Wall Location
RW 1283	Ramp	4 th WB Off-Ramp	4 th	528	4.0	6.0	5.0	2,640	Fill	Edge of Shoulder
RW 223	Cross Street	6 th Lt	4 th	173	4.0	16.0	10.0	1,730	Fill	Back of Soundwall
RW 229	Cross Street	6 th Lt	4 th	375	4.0	8.0	6.0	2,250	Fill	Back of Soundwall
RW 224	Cross Street	6 th Rt	4 th	103	4.0	8.0	6.0	618	Fill	Back of Soundwall
RW 226	Cross Street	6 th Rt	4 th	102	8.0	12.0	10.0	1,020	Fill	Back of Soundwall
RW 230	Cross Street	6 th Rt	4 th	394	4.0	14.0	9.0	3,546	Fill	Back of Soundwall
RW 1290	Mainline/Ramp	EB I-10 / Vineyard EB Off-Ramp	Vineyard	2,881	4.0	6.0	5.0	14,405	Fill	Edge of Shoulder
RW 1320	Mainline	EB I-10	Vineyard	158	6.0	12.0	9.0	1,422	Cut	Edge of Shoulder
RW 1324	Mainline	EB I-10	Vineyard	9,794	6.0	20.0	13.0	127,322	Cut	Edge of Shoulder
RW 1332	Mainline	EB I-10	Vineyard	1,477	4.0	6.0	5.0	7,385	Fill	Edge of Shoulder
RW 1325	Ramp	Vineyard WB Off-Ramp	Vineyard	202	10.0	18.0	14.0	2,828	Fill	Edge of Shoulder
RW 327	Cross Street	Vineyard Lt	Vineyard	118	4.0	4.0	4.0	472	Fill	Back of Soundwall
RW 331	Cross Street	Vineyard Lt	Vineyard	217	4.0	4.0	4.0	868	Fill	Back of Soundwall
RW 332	Cross Street	Vineyard Rt	Vineyard	170	4.0	4.0	4.0	680	Fill	Back of Soundwall
RW 1361	Mainline Median	WB I-10	Archibald	1,266	4.0	8.0	6.0	7,596	Fill	Edge of Shoulder
RW 1379	Mainline	WB I-10		648	5.0	8.0	7.0	4,536	Cut	Edge of Shoulder
RW 1380	Mainline	EB I-10	Archibald	560	5.0	19.0	12.0	6,720	Cut	Edge of Shoulder
RW 1421	Mainline	WB I-10	Haven	292	6.0	8.0	7.0	2,044	Cut	Edge of Shoulder

Table B-3. Alternative 3 Proposed Retaining Walls

Wall No.	Facility	Location	Nearest Interchange	Retaining Wall Quantities						
				Length (Ft)	Min Height (Ft)	Max Height (Ft)	Avg Height (Ft)	Area (Sq Ft)	Cut/Fill Wall	Wall Location
RW 1437	Mainline/Ramp	WB I-10	Haven	892	4.0	10.0	7.0	6,244	Cut	Edge of Shoulder
RW 1396	Mainline/Ramp	EB I-10	Haven	2,929	4.0	6.0	5.0	14,645	Fill	Edge of Shoulder
RW 1438	Mainline/Ramp	EB I-10	Haven	2,999	4.0	8.0	6.0	17,994	Fill	Edge of Shoulder
RW 1428	Mainline	WB I-10	Haven	213	4.0	12.0	8.0	1,704	Cut	Edge of Shoulder
RW 1429	Mainline	EB I-10	Haven	227	4.0	8.0	6.0	1,362	Cut	Edge of Shoulder
RW 1484	Mainline	EB I-10	Milliken	230	4.0	14.0	9.0	2,070	Cut	Edge of Shoulder
RW 1512	Connector	E10-S15	I-15	295	8.0	14.0	11.0	3,245	Cut	Edge of Shoulder
RW 1513	Connector	S15-W10	I-15	150	4.0	8.0	6.0	900	Cut	Edge of Shoulder
RW 1536	Connector	N15-E10	I-15	372	6	16	11	4,092	Cut	Edge of Shoulder
RW 1558	Mainline/Ramp	EB I-10	I-15	1,867	4	8	6	11,202	Fill	Edge of Shoulder
RW 1551	Mainline	WB I-10	I-15	484	4	4	4	1,936	Fill	Edge of Shoulder
RW 1611	Mainline	WB I-10	Etiwanda	323	4.0	6.0	5.0	1,615	Fill	Edge of Shoulder
RW 1617	Mainline	WB I-10	Etiwanda	331	7.0	14.0	11.0	3,641	Fill	Edge of Shoulder
RW 1619	Mainline	WB I-10	Etiwanda	4,406	4.0	22.0	13.0	57,278	Fill	Edge of Shoulder
RW 1581	Ramp	Etiwanda EB Off-Ramp	Etiwanda	126	3.0	4.0	4.0	504	Fill	Edge of Shoulder
RW 1614	Ramp/Mainline	Etiwanda EB On-Ramp / EB-10	Etiwanda	1,573	6.0	14.0	10.0	15,730	Fill	Edge of Shoulder
RW 1584	Mainline	I-10 MEDIAN	Etiwanda	205	6.0	7.0	7.0	1,435	Cut	Edge of Shoulder
RW 1594	Mainline	I-10 MEDIAN	Etiwanda	1,328	6.0	14.0	10.0	13,280	Cut	Edge of Shoulder
RW 1610	Mainline	I-10 MEDIAN	Etiwanda	407	6.0	14.0	10.0	4,070	Cut	Edge of Shoulder

Table B-3. Alternative 3 Proposed Retaining Walls

Wall No.	Facility	Location	Nearest Interchange	Retaining Wall Quantities						
				Length (Ft)	Min Height (Ft)	Max Height (Ft)	Avg Height (Ft)	Area (Sq Ft)	Cut/Fill Wall	Wall Location
RW 1644	Mainline	I-10 Median	Etiwanda	1,050	6.0	8.0	7.0	7,350	Cut	Edge of Shoulder
RW 1686	Mainline	EB I-10	Cherry	92	7.0	9.0	8.0	736	Cut	Edge of Shoulder
RW 1713	Mainline	WB I-10	Cherry	3,964	5.0	8.0	7.0	27,748	Fill	Edge of Shoulder
RW 1775	Mainline	WB I-10	Citrus	1,500	6.0	8.0	7.0	10,500	Fill	Edge of Shoulder
RW 1793	Mainline	WB I-10	Citrus	624	4.0	10.0	7.0	4,368	Cut	Edge of Shoulder
RW 1794	Mainline	EB I-10	Citrus	231	4	6	5	1,155	Fill	Edge of Shoulder
RW 1814	Mainline	EB I-10	Citrus	1,630	4	6	5	8,150	Fill	Edge of Shoulder
RW 1830	Mainline	EB I-10	Citrus	1,631	4	6	5	8,155	Fill	Edge of Shoulder
RW 1851	Mainline	WB I-10	Sierra	318	4.0	12.0	8.0	2,544	Cut	Edge of Shoulder
RW 1857	Mainline	WB I-10	Sierra	371	4.0	14.0	9.0	3,339	Cut	Edge of Shoulder
RW 1850	Mainline	EB I-10	Sierra	586	4.0	20	12	7,032	Cut	Edge of Shoulder
RW 1858	Mainline	EB I-10	Sierra	531	4.0	16	10	5,310	Cut	Edge of Shoulder
RW 1859	Ramp	Sierra WB On-Ramp	Sierra	423	4.0	8.0	6.0	2,538	Cut	Edge of Shoulder
RW 1864	Ramp	Sierra EB On-Ramp	Sierra	608	4.0	4.0	4.0	2,432	Fill	Edge of Shoulder
RW 1912	Mainline	EB I-10	Cedar	4,118	4.0	4.0	4.0	16,472	Fill	Edge of Shoulder
RW 1966	Mainline	EB I-10	Cedar	969	4.0	20.0	12.0	11,628	Cut	Edge of Shoulder
RW 1976	Mainline	EB I-10	Cedar	145	18.0	20.0	19.0	2,755	Cut	Edge of Shoulder
RW 1978	Mainline	EB I-10	Cedar	1,199	4.0	18.0	11.0	13,189	Cut	Edge of Shoulder
RW 1986	Mainline/Ramp	EB I-11	Cedar	5,319	4.0	12.0	8.0	42,552	Cut	Edge of Shoulder
RW 1971	Mainline	WB I-10	Cedar	525	4.0	20.0	12.0	6,300	Cut	Edge of Shoulder

Table B-3. Alternative 3 Proposed Retaining Walls

Wall No.	Facility	Location	Nearest Interchange	Retaining Wall Quantities						
				Length (Ft)	Min Height (Ft)	Max Height (Ft)	Avg Height (Ft)	Area (Sq Ft)	Cut/Fill Wall	Wall Location
RW 1975	Mainline	WB I-10	Cedar	145	16.0	20.0	18.0	2,610	Cut	Edge of Shoulder
RW 1977	Mainline	WB I-10	Cedar	330	4.0	16.0	10.0	3,300	Cut	Edge of Shoulder
RW 1983	Mainline/Ramp	WB I-10	Cedar	1,008	4.0	18.0	11.0	11,088	Cut	Edge of Shoulder
RW 2049	Mainline	WB I-10	Riverside	424	4.0	12.0	8.0	3,392	Cut	Edge of Shoulder
RW 2055	Mainline	WB I-10	Riverside	345	4.0	12.0	8.0	2,760	Cut	Edge of Shoulder
RW 2040	Mainline	EB I-10	Riverside	355	4.0	8.0	6.0	2,130	Fill	Edge of Shoulder
RW 2048	Mainline	EB I-10	Riverside	567	4.0	12.0	8.0	4,536	Cut	Edge of Shoulder
RW 2056	Mainline	EB I-10	Riverside	481	4.0	16.0	10.0	4,810	Cut	Edge of Shoulder
RW 2061	Mainline/Ramp	Riverside WB Off-Ramp / WB I-10	Riverside	832	4.0	8.0	6.0	4,992	Fill	Edge of Shoulder
RW 2064	Mainline/Ramp	Riverside EB On-Ramp / EB I-10	Riverside	1,350	4.0	12.0	8.0	10,800	Fill	Edge of Shoulder
RW 2073	Mainline	WB I-10	Pepper	2,811	4.0	20.0	12.0	33,732	Cut	Edge of Shoulder
RW 2111	Ramp	Pepper WB Off-Ramp	Pepper	337	4.0	6.0	5.0	1,685	Fill	Edge of Shoulder
RW 2018	Mainline/Ramp	Pepper EB On-Ramp / EB I-10	Pepper	2,599	4.0	14.0	9.0	23,391	Fill	Edge of Shoulder
RW 2137	Mainline	WB I-10	Rancho	877	4.0	8.0	6.0	5,262	Fill	Edge of Shoulder
RW 2157	Mainline	WB I-10	Rancho	144	4.0	12.0	8.0	1,152	Cut	Edge of Shoulder
RW 2159	Mainline	WB I-10	Rancho	72	8.0	8.0	8.0	576	Cut	Edge of Shoulder
RW 2161	Mainline	WB I-10	Rancho	670	4.0	16.0	10.0	6,700	Cut	Edge of Shoulder
RW 2134	Mainline	EB I-10	Rancho	979	4.0	16.0	10.0	9,790	Fill	Edge of Shoulder

Table B-3. Alternative 3 Proposed Retaining Walls

Wall No.	Facility	Location	Nearest Interchange	Retaining Wall Quantities						
				Length (Ft)	Min Height (Ft)	Max Height (Ft)	Avg Height (Ft)	Area (Sq Ft)	Cut/Fill Wall	Wall Location
RW 2156	Mainline	EB I-10	Rancho	513	4.0	24.0	14.0	7,182	Cut	Edge of Shoulder
RW 2160	Mainline	EB I-10	Rancho	72	8.0	8.0	8.0	576	Cut	Edge of Shoulder
RW 2162	Mainline	EB I-10	Rancho	545	4.0	24.0	14.0	7,630	Cut	Edge of Shoulder
RW 2163	Ramp	Rancho WB Off-Ramp	Rancho	563	4.0	12.0	8.0	4,504	Fill	Edge of Shoulder
RW 2150	Ramp	Rancho EB Off-Ramp	Rancho	169	4.0	8.0	6.0	1,014	Cut	Edge of Shoulder
RW 2154	Ramp	Rancho EB Off-Ramp	Rancho	451	4.0	10.0	7.0	3,157	Fill	Edge of Shoulder
RW 2169	Mainline	WB I-10	9 th /La Cadena	1,234	4.0	26.0	15.0	18,510	Fill	Edge of Shoulder
RW 2178	Mainline	EB I-10	9 th /La Cadena	224	4.0	12.0	8.0	1,792	Fill	Edge of Shoulder
RW 2186	Mainline	EB I-10	9 th /La Cadena	805	4.0	30.0	17.0	13,685	Fill	Edge of Shoulder
RW 2194	Mainline	EB I-10	9 th /La Cadena	378	4.0	14.0	9.0	3,402	Fill	Edge of Shoulder
RW 2200	Mainline	EB I-10	9 th /La Cadena	580	4.0	16.0	10.0	5,800	Fill	Edge of Shoulder
RW 2196	Ramp	9 th EB Off-Ramp	9 th /La Cadena	323	4.0	22.0	13.0	4,199	Fill	Edge of Shoulder
RW 2202	Ramp	9 th EB On-Ramp	9 th /La Cadena	746	4.0	28.0	16.0	11,936	Fill	Edge of Shoulder
RW 2208	Mainline/Ramp	9 th EB On-Ramp	9 th /La Cadena	972	4.0	22.0	13.0	12,636	Fill	Edge of Shoulder
RW 2209	Mainline	WB I-10	Mt. Vernon	656	4.0	4.0	4.0	2,624	Fill	Edge of Shoulder
RW 2223	Mainline	WB I-10	Mt. Vernon	400	4.0	16.0	10.0	4,000	Cut	Edge of Shoulder
RW 2227	Mainline	WB I-10	Mt. Vernon	79	8.0	12.0	10.0	790	Cut	Edge of Shoulder
RW 2229	Mainline	WB I-10	Mt. Vernon	1,062	4.0	8.0	6.0	6,372	Cut	Edge of Shoulder

Table B-3. Alternative 3 Proposed Retaining Walls

Wall No.	Facility	Location	Nearest Interchange	Retaining Wall Quantities						
				Length (Ft)	Min Height (Ft)	Max Height (Ft)	Avg Height (Ft)	Area (Sq Ft)	Cut/Fill Wall	Wall Location
RW 2218	Mainline	EB I-10	Mt. Vernon	1,079	4.0	8.0	6.0	6,474	Cut	Edge of Shoulder
RW 2219	Ramp	Mt. Vernon WB On-Ramp	Mt. Vernon	556	4.0	10.0	7.0	3,892	Cut	Edge of Shoulder
RW 2241	Ramp	Sperry WB Off-Ramp	Mt. Vernon	587	4.0	16.0	10.0	5,870	Fill	Edge of Shoulder
RW 2240	Mainline/Ramp	Mt. Vernon EB On-Ramp/EB I-10	Mt. Vernon	617	4.0	12.0	8.0	4,936	Fill	Edge of Shoulder
RW 2250	Mainline	EB I-10	Route 215	578	4.0	4.0	4.0	2,312	Cut	Edge of Shoulder
RW 2269	Connector	S215-W10 Connector	Route 215	150	4.0	8.0	6.0	900	Fill	Edge of Shoulder
RW 2297	Mainline	WB I-10	I-215	190	4.0	4.0	4.0	760	Cut	Edge of Shoulder
RW 2293	Ramp	Sunwest Ln WB On-Ramp	I-215	438	4.0	10.0	7.0	3,066	Cut	Edge of Shoulder
RW 2300	Connector	S215-E10	I-215	748	4.0	12.0	8.0	5,983	Fill	Edge of Shoulder
RW 2327	Mainline	WB I-10	Waterman	557	4.0	14.0	9.0	5,013	Fill	Edge of Shoulder
RW 2335	Mainline/Ramp	Carnegie Dr WB On-Ramp/WB I-10	Waterman	857	4.0	20.0	12.0	10,284	Fill	Edge of Shoulder
RW 2345	Mainline	WB I-10	Waterman	182	4.0	8.0	6.0	1,091	Fill	Edge of Shoulder
RW 2347	Mainline	WB I-10	Waterman	253	4.0	12.0	8.0	2,021	Fill	Edge of Shoulder
RW 2309	Ramp	Waterman WB On-Ramp	Waterman	944	4.0	10.0	7.0	6,608	Fill	Edge of Shoulder
RW 2349	Ramp	Carnegie WB Off-Ramp	Waterman	127	4.0	4.0	4.0	510	Cut	Edge of Shoulder

Table B-3. Alternative 3 Proposed Retaining Walls

Wall No.	Facility	Location	Nearest Interchange	Retaining Wall Quantities						
				Length (Ft)	Min Height (Ft)	Max Height (Ft)	Avg Height (Ft)	Area (Sq Ft)	Cut/Fill Wall	Wall Location
RW 2346	Ramp	Waterman EB On-Ramp	Waterman	365	4.0	8.0	6.0	2,190	Fill	Edge of Shoulder
RW 2353	Mainline/Ramp	Carnegie WB Off-Ramp/WB I-10	Tippecanoe	2,618	4.0	8.0	6.0	15,708	Fill	Edge of Shoulder
RW 2405	Mainline	WB I-10	Tippecanoe	1,011	4.0	12.0	8.0	8,086	Fill	Edge of Shoulder
RW 2388	Mainline	EB I-10	Tippecanoe	780	4.0	10.0	7.0	5,458	Fill	Edge of Shoulder
RW 2372	Ramp	Tippecanoe EB Off-Ramp	Tippecanoe	631	8.0	10.0	9.0	5,675	Fill	Edge of Shoulder
RW 2383	Ramp	Tippecanoe WB Loop On-Ramp	Tippecanoe	321	4.0	6.0	5.0	1,603	Fill	Edge of Shoulder
RW 2415	Mainline/Ramp	WB I-10	Mountain View	1,356	6.0	10.0	8.0	10,848	Fill	Edge of Shoulder
RW 2431	Mainline	WB I-10	Mountain View	891	4.0	10.0	7.0	6,237	Fill	Edge of Shoulder
RW 2443	Mainline	WB I-10	Mountain View	779	4.0	10.0	7.0	5,453	Fill	Edge of Shoulder
RW 2445	Mainline/Ramp	WB I-10	Mountain View	1,352	10.0	14.0	12.0	16,224	Fill	Edge of Shoulder
RW 2461	Mainline	WB I-10	Mountain View	1,502	14.0	16.0	15.0	22,530	Fill	Edge of Shoulder
RW 2422	Mainline	EB I-10	Mountain View	665	4.0	8.0	6.0	3,990	Fill	Edge of Shoulder
RW 2434	Mainline	EB I-10	Mountain View	877	4.0	10.0	7.0	6,139	Fill	Edge of Shoulder
RW 2442	Mainline	EB I-10	Mountain View	721	4.0	12.0	8.0	5,768	Fill	Edge of Shoulder
RW 2444	Mainline/Ramp	EB I-10	Mountain View	1,587	8.0	16.0	12.0	19,044	Fill	Edge of Shoulder
RW 2429	Ramp	Mountain View WB On-Ramp	Mountain View	1,115	4.0	6.0	5.0	5,575	Fill	Edge of Shoulder
RW 2432	Ramp	Mountain View EB Off-Ramp	Mountain View	534	10.0	14.0	12.0	6,409	Fill	Edge of Shoulder

Table B-3. Alternative 3 Proposed Retaining Walls

Wall No.	Facility	Location	Nearest Interchange	Retaining Wall Quantities						
				Length (Ft)	Min Height (Ft)	Max Height (Ft)	Avg Height (Ft)	Area (Sq Ft)	Cut/Fill Wall	Wall Location
RW 2483	Mainline	WB I-10	California	1,082	4.0	12.0	8.0	8,656	Fill	Edge of Shoulder
RW 2495	Mainline	WB I-10	California	528	6.0	16.0	11.0	5,808	Fill	Edge of Shoulder
RW 2499	Mainline/Ramp	WB I-10	California	2,167	6.0	14.0	10.0	21,670	Fill	Edge of Shoulder
RW 2464	Mainline	EB I-10	California	2,072	4.0	12.0	8.0	16,576	Fill	Edge of Shoulder
RW 2486	Mainline	EB I-10	California	723	4.0	8.0	6.0	4,338	Fill	Edge of Shoulder
RW 2496	Mainline	EB I-10	California	664	4.0	10.0	7.0	4,648	Fill	Edge of Shoulder
RW 2498	Mainline/Ramp	EB I-10	California	2,153	4.0	10.0	7.0	15,071	Fill	Edge of Shoulder
RW 2484	Ramp	California EB Off-Ramp	California	339	6.0	12.0	9.0	3,051	Fill	Edge of Shoulder
RW 2481	Ramp	California WB On-Ramp	California	1,328	4.0	12.0	8.0	10,624	Fill	Edge of Shoulder
RW 2521	Mainline	WB I-10	Alabama	697	4.0	12.0	8.0	5,576	Fill	Edge of Shoulder
RW 2522	Mainline/Ramp	EB I-10	Alabama	1,903	4.0	12.0	8.0	15,224	Fill	Edge of Shoulder
RW 2562	Ramp	Tennessee EB Off-Ramp	Tennessee	132	4.0	6.0	5.0	659	Cut	Edge of Shoulder
RW 2578	Ramp	Tennessee EB On-Ramp	Tennessee	708	4.0	4.0	4.0	2,832	Fill	Edge of Shoulder
RW 2598	Mainline	EB I-10	Texas	571	4.0	4.0	4.0	2,284	Fill	Edge of Shoulder
RW 2606	Mainline	EB I-10	Texas	307	4.0	4.0	4.0	1,228	Fill	Edge of Shoulder
RW 2729	Mainline/Ramp	WB I-10	Ford	1,495	4.0	12.0	8.0	11,960	Cut	Edge of Shoulder
RW 2745	Mainline	WB I-10	Ford	260	4.0	8.0	6.0	1,560	Fill	Edge of Shoulder
RW 2751	Mainline	WB I-10	Ford	639	4.0	8.0	6.0	3,834	Fill	Edge of Shoulder

Table B-3. Alternative 3 Proposed Retaining Walls

Wall No.	Facility	Location	Nearest Interchange	Retaining Wall Quantities						Cut/Fill Wall	Wall Location
				Length (Ft)	Min Height (Ft)	Max Height (Ft)	Avg Height (Ft)	Area (Sq Ft)			
RW 2761	Mainline	WB I-10	Ford	125	4.0	4.0	4.0	500	Fill	Edge of Shoulder	
RW 2728	Mainline	EB I-10	Ford	1,221	4.0	8.0	6.0	7,326	Fill	Edge of Shoulder	
RW 2746	Mainline	EB I-10	Ford	309	4.0	8.0	6.0	1,854	Fill	Edge of Shoulder	
RW 2754	Mainline	EB I-10	Ford	110	4.0	4.0	4.0	440	Fill	Edge of Shoulder	
RW 2744	Ramp	Ford EB Off-Ramp	Ford	287	4.0	4.0	4.0	1,148	Fill	Edge of Shoulder	
Total Retaining Wall Quantities for Alternative 3				179,871				1,731,131			

Table B-4. Anticipated Sound Wall Locations and Heights for Alternatives 2 and 3

Sound-Wall No.	Side of Freeway		Soundwall Location and Side of Highway	Alternative		Approx. Wall Height, (Feet)	Approx. Wall Length, (Feet)
	EB	WB		2	3		
SW634	X		Along edge of pavement on I-10 mainline, Top of retaining wall and structure of the Towne Avenue Over-Crossing		X	14	1,120
SW635		X	Along edge of pavement on I-10 mainline, Top of retaining wall of the Towne Avenue Over-Crossing		X	14	336
SW636	X		Along edge of pavement of off-ramp from Towne Avenue, then transitions on top of retaining wall along I-10 mainline before San Antonio Avenue		X	14	1,028
SW639		X	Along edge of pavement of off-ramp to Towne Avenue, Before San Antonio Avenue		X	14	1,056
SW648	X		Along edge of pavement on I-10 mainline, in the area of San Antonio Avenue		X	14	193
SW649		X	Along edge of pavement on I-10 mainline, in the area of San Antonio Avenue		X	14	189
SW650	X		Along edge of pavement on I-10 mainline, Between San Antonio Avenue and Indian Hill Blvd		X	12,14	2,703
SW651		X	Along edge of pavement on I-10 mainline, Between San Antonio Avenue and Indian Hill Blvd		X	14	4,690
S699	X		Along edge of pavement on I-10 mainline, Between Bucknell Avenue and Indian Hill Blvd		X	16,18 and 20	450
SW708	X		At edge of ROW line, between Indian Hill Avenue and College Avenue		X	16	794
SW716	X		At edge of ROW line, in the area of College Avenue		X	14	133
SW715		X	Along edge of pavement on I-10 mainline, Between Indian Hill Avenue and approximately Cumberland Place		X	14	913
SW725		X	Along edge of pavement on I-10 mainline, Between Cumberland Place and Mills Avenue		X	14	691
SW1		X	Along edge of pavement on I-10 mainline, Between Mills Avenue and approximately Felipe Avenue		X	14	1,830
SW2	X		Along edge of pavement on I-10 mainline, in the area of Mills Avenue		X	14	508
SW6	X		Along edge of pavement on I-10 mainline, in the area of Ramona Avenue		X	14	440

Table B-4. Anticipated Sound Wall Locations and Heights for Alternatives 2 and 3

Sound-Wall No.	Side of Freeway		Soundwall Location and Side of Highway	Alternative		Approx. Wall Height, (Feet)	Approx. Wall Length, (Feet)
	EB	WB		2	3		
SW10	X		Along edge of pavement on I-10 mainline, Between Ramona Avenue and approximately Camulos Avenue		X	14	986
SW22	X		At edge of ROW line, Between Helena Avenue and Monte Vista Avenue		X	12	1,356
SW30	X		Along edge of pavement on I-10 mainline, Between Tudor Avenue and Monte Vista Avenue		X	12	655
SW29		X	Along edge of pavement of on-ramp from Monte Vista Avenue		X	16	197
SW23		X	Along edge of pavement of on-ramp from Monte Vista Avenue		X	16	1,162
SW66	X		Along edge of pavement on I-10 mainline, in area of Central Avenue		X	14	452
SW68	X		Along edge of pavement on I-10 mainline, in the area of Central Avenue		X	10	334
SW94	X		Along edge of pavement on I-10 mainline, Between Central Avenue and approximately Mountain Avenue		X	8,12 and 14	4,596
S1117		X	At edge of ROW line, in the area of Mountain Avenue		X	12	222
SW136	X		At edge of ROW line, Between Palmetto Avenue and Barlow Way		X	14	350
SW140	X		At edge of ROW line, Between Palmetto Avenue and San Antonio Avenue		X	14	1,378
SW143		X	At edge of ROW line, Between Barlow Way and San Antonio Avenue		X	10	1,121
SW154	X		At edge of ROW line, Between San Antonio Avenue and Euclid Avenue		X	8,12 and 14	2,800
SW157		X	At edge of ROW line, Between San Antonio Avenue and approximately White Avenue		X	8,10	2,176
S1190		X	At edge of ROW line, Between Euclid Avenue and Sultana Avenue		X	8,10 and 12	873
SW198	X		At edge of ROW line, Between Sultana Avenue and Campus Avenue		X	13	1,373
SW201		X	At edge of ROW line, Between Sultana Avenue and Campus Avenue		X	13	1,362
SW212	X		At edge of ROW line, Between Campus Avenue and 6 th Street		X	14	1,241
SW213		X	At edge of ROW line, Between Campus Avenue and 6 th Street		X	13	1,716
SW230	X		At edge of ROW line, Between Allyn Avenue and La Paloma Avenue		X	14,16	1,317
S1244	X		Along edge of pavement on I-10 mainline, in area of La Paloma Avenue		X	14	175

Table B-4. Anticipated Sound Wall Locations and Heights for Alternatives 2 and 3

Sound-Wall No.	Side of Freeway		Soundwall Location and Side of Highway	Alternative		Approx. Wall Height, (Feet)	Approx. Wall Length, (Feet)
	EB	WB		2	3		
SW246	X		Along edge of pavement on I-10 mainline, in the area of Cucamonga Avenue		X	14	599
SW231		X	At edge of ROW line, in the area of 6 th Street		X	14	1,178
SW245		X	At edge of ROW line, in the area of 6 th Street to Grove Avenue		X	14	1,474
S1262	X		Along edge of pavement on I-10 mainline, in the area of Grove Avenue		X	14	297
S1266	X		Along edge of pavement on I-10 mainline, in the area of 4 th Street		X	12	484
SW259		X	Along edge of pavement on I-10 mainline, and on the on-ramp of 4 th Street		X	14	854
SW275		X	Along edge of pavement on I-10 mainline, in the area of 4 th Street		X	14	899
S1285		X	At edge of ROW line, in the area of 4 th Street		X	14	407
S1276	X		Along edge of pavement on I-10 mainline, in the area of 4 th Street		X	8	216
SW278	X		Along edge of pavement on I-10 mainline, Between Glen Ave and I Street		X	14,16	1,840
S1306	X		Along edge of pavement on I-10 mainline, Between I Street and Vineyard Avenue		X	8,10,12 and 14	2,448
SW296		X	At edge of ROW, Between Mariposa Avenue and approximately Vineyard Avenue		X	14	2,256
S21		X	Along Vineyard Avenue on-ramp		X	12	464
SW334	X		Along edge of pavement on I-10 mainline, in the area of Vineyard Avenue		X	14	580
SW697		X	At edge of ROW line, between Cherry Avenue to approximately Beech Avenue	X		14	4,651
SW697		X	At edge of ROW line and then in runs into properties along ROW line, between Cherry Avenue to approximately Beech Avenue		X	14	4,649
S1749		X	At edge of ROW, in area of Beech Avenue	X		12	200
S1819		X	At edge of ROW line, between Citrus off-ramp to approximately Cypress Avenue	X		12,14 and 16	1,898

Table B-4. Anticipated Sound Wall Locations and Heights for Alternatives 2 and 3

Sound-Wall No.	Side of Freeway		Soundwall Location and Side of Highway	Alternative		Approx. Wall Height, (Feet)	Approx. Wall Length, (Feet)
	EB	WB		2	3		
S1819		X	At edge of ROW line, between Citrus off-ramp to approximately Cypress Avenue		X	12,14	2,055
S1833		X	At edge of ROW line, between Cypress Avenue and west of Juniper Avenue	X		14,16	691
S1833		X	At edge of ROW line, between Cypress Avenue and west of Juniper Avenue		X	12,14	810
S1877		X	At edge of ROW, immediately east of Sierra Avenue WB off-ramp	X		16	1,502
S1877		X	At edge of ROW, immediately east of Sierra Avenue WB off-ramp		X	14	1,502
S1907		X	At edge of ROW, from approximately west of Alder Avenue to approximately Linden Avenue	X		12,14,and 16	5,359
S1907		X	At edge of ROW, from approximately west of Alder Avenue to approximately Linden Avenue		X	12,14,and 16	5,288
SW1		X	At edge of ROW, from approximately east of Locus Avenue to approximately Linden Avenue	X	X	16	1,811
S1969		X	At edge of ROW and then transitions to edge of shoulder, from approximately Orchard Street to east of Magnolia Street	X		12	354
S1969		X	At edge of ROW, from approximately Orchard Street to east of Magnolia Street		X	12	279
SW4		X	At edge of ROW, from Vine Street to Larch Avenue	X	X	14	635
S2023		X	At edge of ROW, in area of Willow Avenue	X	X	20	444
S2079		X	At edge of ROW, in area of Acacia Avenue	X		16	729
S2079		X	At edge of ROW, in area of Acacia Avenue		X	18	851
SW-B5		X	From off-ramp at Rancho Avenue to approximately Colton Spur RR UC of I-10 mainline	X	X	13	1,787
S2382	X		On top of retaining wall along off-ramp on Tippecanoe Avenue	X		12	792
S2382	X		On top of retaining wall along off-ramp on Tippecanoe Avenue		X	12	837
S2384	X		At edge of ROW, Along Tippecanoe Avenue off-ramp	X		16	394
S2384	X		At edge of ROW, Along Tippecanoe Avenue off-ramp		X	14	394

Table B-4. Anticipated Sound Wall Locations and Heights for Alternatives 2 and 3

Sound-Wall No.	Side of Freeway		Soundwall Location and Side of Highway	Alternative		Approx. Wall Height, (Feet)	Approx. Wall Length, (Feet)
	EB	WB		2	3		
SW241		X	Along edge of property line, approximately South Tippecanoe Avenue and West of South Richardson Street	X	X	14	694
SW264		X	Along edge of property line, approximately South Richardson Street to Elm Avenue	X	X	16	1,845
S2435		X	At edge of ROW, Between Elm Avenue and Mountain View Avenue	X		10	469
S2435		X	At edge of ROW, Between Elm Avenue and Mountain View Avenue	X	X	14	469
S2437		X	Along edge of pavement on I-10 mainline, in the area of Mountain View Avenue	X		14	1,016
S2437		X	Along edge of pavement on I-10 mainline, in the area of Mountain View Avenue		X	14	971
S2438	X		Along edge of pavement on I-10 mainline, in the area of Mountain View Avenue	X		12,14	1,262
S2438	X		Along edge of pavement on I-10 mainline, in the area of Mountain View Avenue		X	12	1,201
S2434A	X		At edge of ROW, in the area of Mountain View Avenue	X		12,14 and 16	1,418
S2434A	X		At edge of ROW, in the area of Mountain View Avenue		X	12,14 and 16	1,418
S2476	X		At edge of shoulder, approximately west of Bryn Mawr Avenue to west of California Street		X	12,14	1,957
S2476	X		At edge of shoulder, approximately west of Bryn Mawr Avenue to west of California Street	X		12,14	2,098
S2619		X	At edge of shoulder, along Orange Street on-ramp and I-10 mainline		X	10,12 and 14	2,300
S2638	X		Along edge of pavement on I-10 mainline, between the Orange Street OC and 6 th Street on-ramp	X	X	12	1,241
S2654	X		Along edge of pavement on I-10 mainline, from the 6 th Street on-ramp to SW158	X	X	10,12	2,804
SW149		X	Along edge of pavement on I-10 mainline, from the 6 th Street off-ramp to Church Street OC	X	X	14	1,495

Table B-4. Anticipated Sound Wall Locations and Heights for Alternatives 2 and 3

Sound-Wall No.	Side of Freeway		Soundwall Location and Side of Highway	Alternative		Approx. Wall Height, (Feet)	Approx. Wall Length, (Feet)
	EB	WB		2	3		
SW499		X	Along edge of pavement on I-10 mainline, Church Street OC	X	X	14	224
SW153		X	Along edge of pavement on I-10 mainline, from Church Street OC to Park Avenue	X	X	14	558
SW509		X	Along edge of pavement on I-10 mainline, over-crossing between SW153 and SW157	X	X	14	472
SW157		X	Along edge of pavement on I-10 mainline, from Park Avenue to University Street on-ramp	X	X	14	1,106
SW158	X		Along edge of pavement on I-10 mainline and University Street off-ramp	X	X	12	1,274
SW159		X	Along edge of pavement on I-10 mainline, from University Street on-ramp gore to University Street OC	X	X	14	257
SW523		X	Along edge of pavement on I-10 mainline, University Street OC	X	X	14	216
SW161		X	Along edge of pavement on I-10 mainline, from University Street OC to Citrus Avenue OC	X	X	14	537
SW531		X	Along edge of pavement on I-10 mainline, Citrus Avenue OC	X	X	14	321
SW163		X	Along edge of pavement on I-10 mainline, from Citrus Avenue OC to Cypress Avenue OC	X	X	14	264
SW537		X	Along edge of pavement on I-10 mainline, Cypress Avenue OC	X	X	14	196
SW165		X	Along edge of pavement on I-10 mainline, Cypress Avenue OC to Cypress Avenue off-ramp gore	X	X	14	405
SW160	X		Along edge of pavement on I-10 mainline, from University Street OC to Citrus Avenue OC	X	X	14	202
SW530	X		Along edge of pavement on I-10 mainline, Citrus Avenue OC	X	X	14	376
SW162	X		Along edge of pavement on I-10 mainline, from Citrus Avenue OC to Cypress Avenue OC	X	X	14	379
SW536	X		Along edge of pavement on I-10 mainline, Cypress Avenue OC	X	X	14	198

Table B-4. Anticipated Sound Wall Locations and Heights for Alternatives 2 and 3

Sound-Wall No.	Side of Freeway		Soundwall Location and Side of Highway	Alternative		Approx. Wall Height, (Feet)	Approx. Wall Length, (Feet)
	EB	WB		2	3		
SW164	X		Along edge of pavement on I-10 mainline, from Cypress Avenue OC to Cypress Avenue on-ramp gore	X	X	14	497
SW166	X		Along edge of pavement of the Cypress Avenue on-ramp and I-10 mainline to the Palm Avenue OC	X	X	14	757
SW550	X		Along edge of pavement on I-10 mainline, Palm Avenue OC	X	X	14	180
SW170	X		Along edge of pavement on I-10 mainline, from the Palm Avenue OC to the Highland Avenue OC	X	X	14	1,145
SW564	X		Along edge of pavement on I-10 mainline, Highland Avenue OC	X	X	14	179
SW172	X		Along edge of pavement on I-10 mainline, from the Highland Avenue OC	X	X	14	322
SW167		X	Along edge of pavement of the Cypress Avenue off-ramp and I-10 mainline to the Palm Avenue OC	X	X	14	973
SW551		X	Along edge of pavement on I-10 mainline, Palm Avenue OC	X	X	14	176
SW169		X	Along edge of pavement on I-10 mainline, from the Palm Avenue OC to the Highland Avenue OC	X	X	14	1,144
SW563		X	Along edge of pavement on I-10 mainline, Highland Avenue OC	X	X	14	175
SW171		X	Along edge of pavement on I-10 mainline, from the Highland Avenue OC	X	X	14	349
SW187		X	Along edge of pavement on I-10 mainline, Between Ford Street and Wabash Avenue	X	X	16	2,408
SWXX1*	X		Railyard Landscape Unit Along the edge of pavement between Valley Boulevard and the EB lanes of I-10, east of N. Rancho Avenue		X	14	2,000
SWXX2*	X		Railyard Landscape Unit Along the edge of pavement for the EB lanes of I-10, west of N. Rancho Avenue		X	14	2,400

Table B-4. Anticipated Sound Wall Locations and Heights for Alternatives 2 and 3

Sound-Wall No.	Side of Freeway		Soundwall Location and Side of Highway	Alternative		Approx. Wall Height, (Feet)	Approx. Wall Length, (Feet)
	EB	WB		2	3		
SWXX3*	X		Railyard Landscape Unit Along the edge of pavement for the EB lanes of I-10, between N. Mount Vernon Avenue and N. Sperry Drive		X	14	1,800
SWXX4*	X		Redlands Landscape Unit An extension of an existing sound wall (SW171) from west of Highlands Avenue to Ford Street at Crestview Road, along the edge of the ROW	X	X	14	950
SWXX5*		X	Redlands Landscape Unit Along the edge of ROW In the area of Marshall Street, west of Highlands Avenue	X	X	14	700
SWXX6*	X		Redlands Landscape Unit Along the edge of pavement for EB I-10, between the Redlands Boulevard overcrossing and Devonshire Drive	X	X	14	1,500

*These walls are currently still under study and are included here under the assumption that they will eventually be included as part of the project.